



User Manual

Wet / Dry vacuum system



Model Number
WD-512-SS-BIDZ
WD-814-SS-BIDZ

TABLE OF CONTENTS

1. IMPORTANT SAFETY INSTRUCTIONS	P.3-4
2. GROUNDING INSTRUCTIONS	P.4
3. VACUUM SPECIFICATION	P.5
4. INCLUDED ACCESSORIES	P.5
5. EXPLODED VIEW - PART LIST	P.6
6. VACUUM ASSEMBLY	P.7
7. DRY PICKUP SYSTEM OPERATION INSTRUCTION	P.8
8. WET PICKUP SYSTEM OPERATION INSTRUCTION	P.9
9. BLOWER PORT INSTRUCTION	P.10
10. DUST SHAKING INSTRUCTION	P.10
11. EMPTYING LIQUID WASTE FROM THE TANK DRAIN	P.11
12. AUTOMATIC SUCTION SHUT OFF	P.11
13. FILTER MAINTENANCE	P.11
14. LUBRICATION	P.11
15. TROUBLE SHOOTING	P.12
16. STORAGE	P.12
17. SERVICE	P.12
18. SAFETY NOTE	P.12
19. WARRANTY	P.13





1. IMPORTANT SAFETY INSTRUCTIONS

Carefully read all of these instructions before using this vacuum system

WHEN USING AN ELECTRIC APPLIANCE, BASIC PRECAUTIONS SHOULD ALWAYS BE FOLLOWED, INCLUDING THE FOLLOWING:



WARNING - TO REDUCE THE RISK OF FIRE, ELECTRIC SHOCK OR INJURY:

1. Do not leave appliance when plugged in. Unplug from outlet when not in use and before servicing. Connect to a properly grounded outlet only. See Grounding Instructions.
2. Do not expose to rain – store indoors only.
3. Do not allow to be used as a toy. Close attention is necessary when used by or near children.
4. Use only as described in this manual. Use only manufacturer's recommended attachments.
5. Do not use with damaged cord or plug. If appliance is not working as it should, has been dropped, damaged, left outdoors or dropped into water, contact Bidz Vacuum customer service for assistance.
6. Do not pull or carry by cord, use cord as a handle, close a door on cord or pull cord around sharp edges or corners. Do not run appliance over cord. Keep cord away from heated surfaces.
7. Do not unplug by pulling on cord. To unplug, grab the plug not the cord.
8. Do not handle plug or appliance with wet hands.
9. Do not put any object into openings. Do not use with any openings blocked; keep free of dust, lint, hair and anything that may reduce air flow.
10. Keep hair, loose clothing, fingers and all parts of body away from openings and moving parts.
-  11. Do not pick up anything that is burning or smoking, such as cigarettes, matches or hot ashes.
12. Do not use without dust bag and/or filters in place.
13. Turn off all controls before unplugging.
14. Use extra care when cleaning on stairs.
-  15. Do not use to pick up flammable or combustible liquids such as gasoline or use in areas where they may be present.
16. Do not use your vacuum cleaner as a sprayer of flammable liquids such as oil base paints, lacquers, household cleaners, etc.
17. Do not vacuum toxic, carcinogenic, combustible or other hazardous materials such as asbestos, arsenic, barium, beryllium, lead, pesticides or other health endangering materials. Specially designed units are available for these purposes.
-  18. Do not pick up soot, cement, plaster or drywall dust without cartridge filter and collection filter bag in place. These are very fine particles that may pass through the foam and affect the performance of the motor or be exhausted back into the air. Additional collection filter bags are available.
19. Do not leave the cord lying on the floor once you have finished the cleaning job. It can become a tripping hazard.
20. Use special care when emptying heavily loaded tanks.
21. To avoid spontaneous combustion, empty tank after each use.
22. The operation of the blower can result in foreign objects being blown into eyes, which can result in eye damage. Always wear safety goggles when operating.
23. STAY ALERT. Watch what you are doing and use common sense. Do not use vacuum cleaner when you are tired, distracted or under the influence of drugs, alcohol or medication causing diminished control.
-  24. WARNING! Do NOT use this vacuum cleaner to vacuum lead paint debris as this may disperse fine lead particles into the air. This vacuum cleaner is not intended for use under EPA Regulation 40 CFR Part 745 for lead paint material cleanup.



WARNING DO NOT LEAVE VACUUM UNATTENDED WHEN IT IS PLUGGED IN AND/OR OPERATING. UNPLUG UNIT WHEN NOT IN USE.

KEEP THESE INSTRUCTIONS IN A SAFE PLACE

1. IMPORTANT SAFETY INSTRUCTIONS (Cont.)

General Guidelines to be Respected at All Times

- Do not use the machine in combustible and explosive places in case the motor spark causes fire
- Do not jam the air inlet mouth, in case temperature rises and damages the motor
- Do not collect combustible and explosive objects such as glowing cigarettes, gasoline, etc
- Do not collect sharp objects
- Do not collect objects which can easily attach on the filter such as limestone powder, gypsum and graphite powder, as there those will block the ventilation and damage the motor
- Turn off the vacuum and unplug it every time after using or when being repaired
- Keep the vacuum away from strong sunlight and high temperature places.

2. GROUNDING INSTRUCTIONS

This appliance must be grounded. If it should malfunction or breakdown, grounding provides a path of least resistance for electric current in order to reduce the risk of electric shock. This appliance is equipped with a cord having an equipment-grounding conductor and grounding plug. The plug must be inserted into an appropriate outlet that is properly installed and grounded in accordance with all local codes and ordinances.

WARNING

Improper connection of the power unit grounding wire can result in a risk of electric shock. If you are unsure whether the unit is properly grounded, contact a professional electrician. Do not modify the power cord supplied with this power unit. If this power cord connector does not fit your electrical outlet, have the proper electrical outlet installed by a professional electrician. This power unit is designed to be used on a nominal electrical circuit 110-120 VAC in 60 Hz. This appliance should be used without an adapter. In Canada, the use of a temporary adapter is not permitted BY THE CANADIAN ELECTRICAL CODE.

IMPORTANT

The manufacturer shall not be held responsible for damages caused by the inappropriate use of this system. The warranty does not cover damages caused by improper use of this system or problems resulting from an installation that does not meet specifications, or any structural or functional alterations made to the vacuum. An inappropriate use of the system made without respecting the instructions in this document will also be considered misuse. All conditions and restrictions are laid out in the limited warranty and the user manual. To optimize the performance and life of your BIDZ Vacuum, it is important to perform regular maintenance and clean the filter according to the guidelines listed in this user manual.

Extension cords

When using the appliance at a distance where an extension cord becomes necessary, a 3-conductor grounding cord of adequate size must be used for safety and to prevent loss of power and overheating. Use Table A to determine A.W.G. wire size required. To determine the ampere rating of your vacuum, refer to nameplate located on motor housing. Before using appliance, inspect power cord for loose or exposed wires and damaged insulation. Make any needed repairs or replacements before using your appliance. Use only three-wire outdoor extension cords which have three-prong grounding-type plugs and three-pole receptacles which accept the extension cord's plug. When vacuuming liquids, make sure the extension cord connection does not come in contact with the liquid.

NOTE: STATIC SHOCKS ARE COMMON IN DRY AREAS OR WHEN THE RELATIVE HUMIDITY OF THE AIR IS LOW. THIS IS ONLY TEMPORARY AND DOES NOT AFFECT THE USE OF THE SYSTEM. TO REDUCE THE FREQUENCY OF STATIC SHOCKS IN YOUR HOME, THE BEST REMEDY IS TO ADD MOISTURE TO THE AIR WITH A CONSOLE OR INSTALLED HUMIDIFIER.

TABLE A

Volts		Total length of cord in feet			
120V		25	50	100	150
More Than	- No more Than	AWG			
		0	6	18	16
6	10	18	16	14	12
10	12	16	16	14	12
12	16	14	12	Not recommended	

3. VACUUM SPECIFICATION



4. INCLUDED ACCESSORIES

Wet/Dry vacuum 12" utility brush



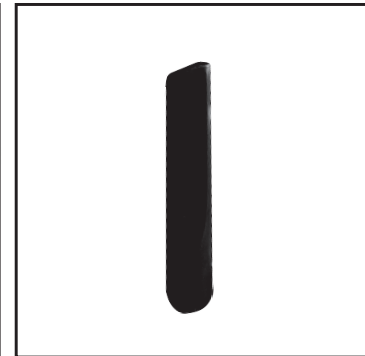
8' Crushproof hose



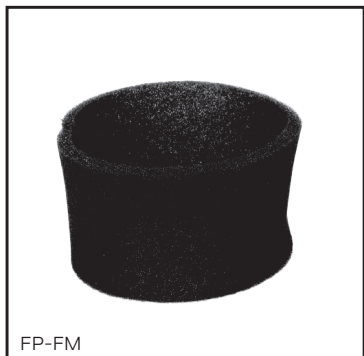
Plastic wand



10" crevice tool



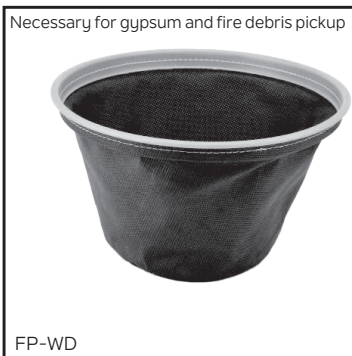
Foam filter for wet pickup



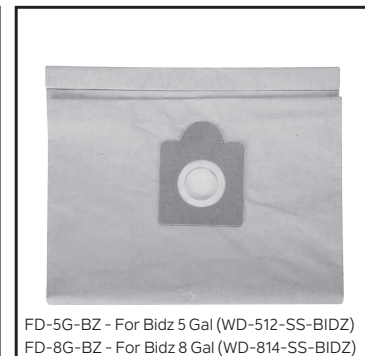
Hepa Cartridge filter for dry pickup



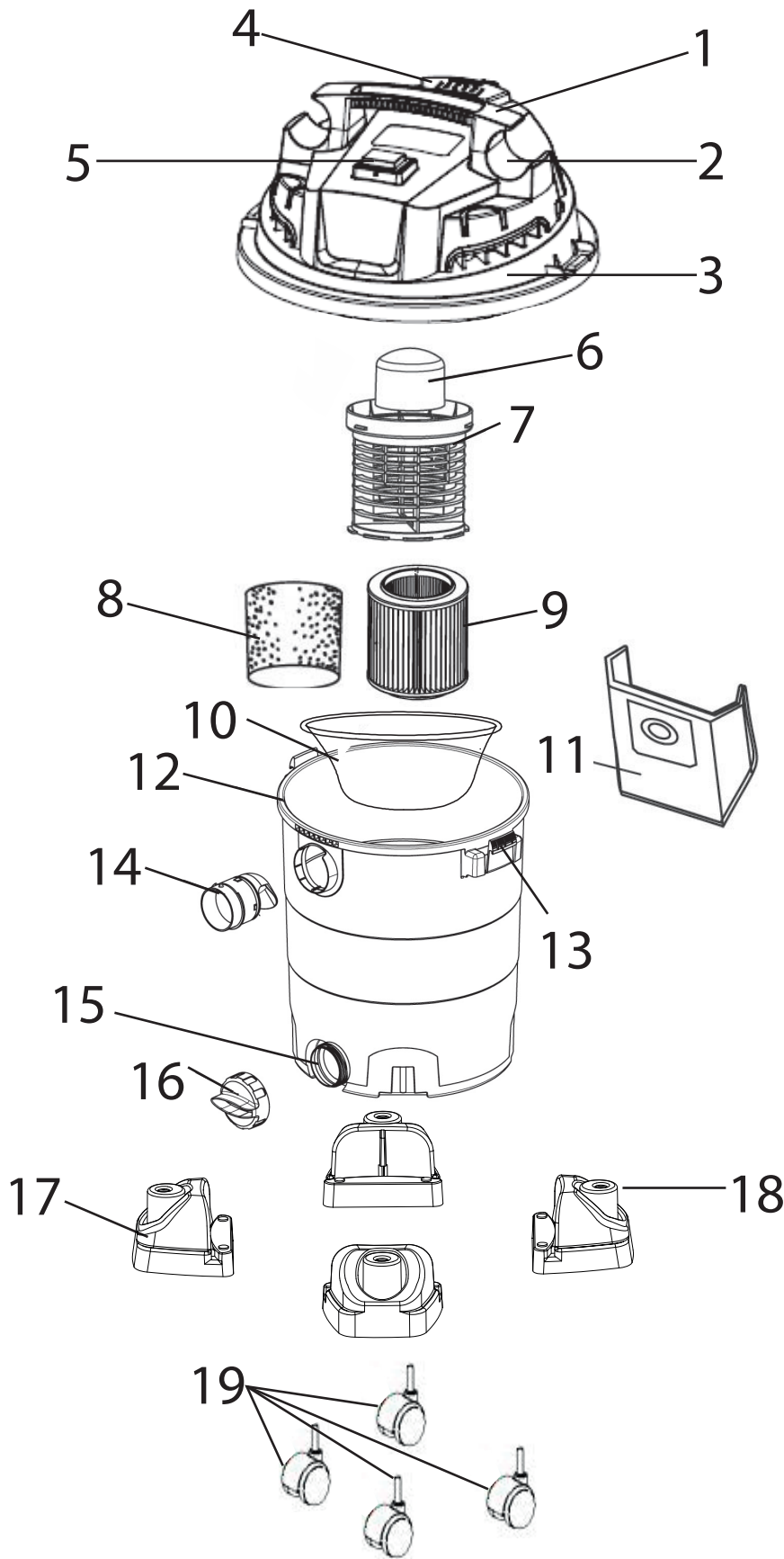
Dirt collector for dry pickup



Disposable filtration bag



5. EXPLODED VIEW - PART LIST



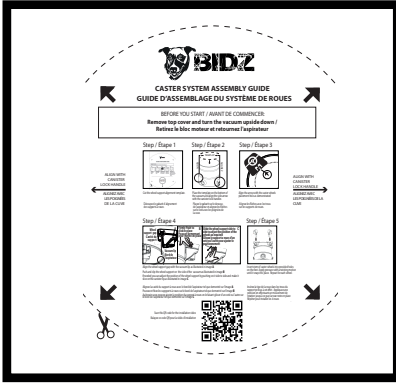
- 1. Handle
- 2. Hose storage
- 3. Top cover assembly
- 4. Dust shacking button
- 5. On-Off switch
- 6. Float
- 7. Filter cage
- 8. Foam filter x 1 (FP-FM)
- 9. Cartridge filter x 1 (FP-HP)
- 10. Dust collector (FP-WD)
- 11. Disposable bags:
5 Gal.: FD-5G-BZ
8 Gal.: FD-8G-BZ
- 12. Debris receptacle
- 13. Latch assemble
- 14. Hose port
- 15. Tank drain port
- 16. Tank drain cap
- 17. Wheel base
- 18. Accessory storage
- 19. Wheels x 4

6. VACUUM ASSEMBLY

IMPORTANT: Remove the vacuum from the box. Open the dirt receptacle and make sure all the accessories are in good condition.

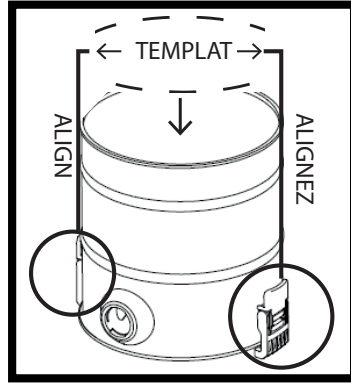
WHEELS:

Step / Étape 1



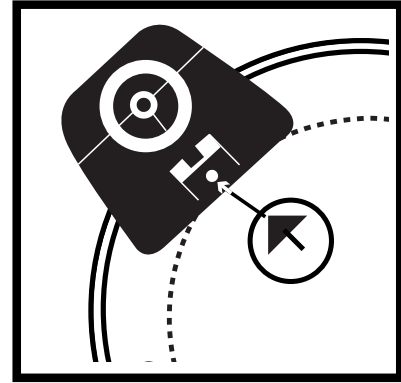
Cut the wheel support alignment template.

Step / Étape 2



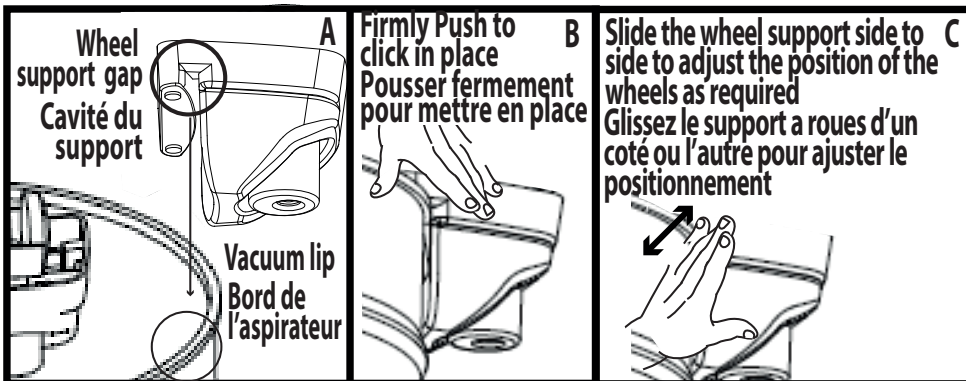
Place the template on the bottom of the vacuum and align the side arrow with the canister lock handles

Step / Étape 3



Align the arrow with the caster wheels placement hole as demonstrated

Step / Étape 4

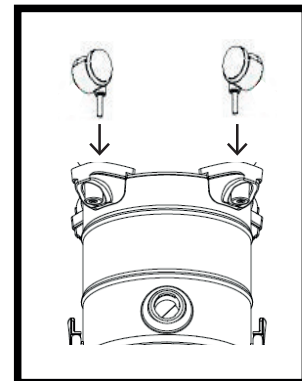


Align the wheel support gap with the vacuum lip as illustrated in image **A**

Push and clip the wheel support on the side of the vacuum as illustrated in image **B**

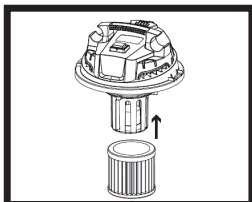
If needed you can adjust the position of the wheel support by pushing on it side to side and make it slice on the canister lip as illustrated in image **C**

Step / Étape 5



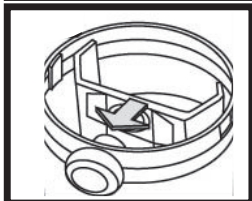
Insert stem of caster wheels into provided holes on the feet. Apply pressure with a twisting motion until it snap into place. Repeat for each wheel.

6. VACUUM ASSEMBLY (Cont.)



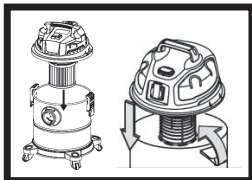
Filter

To install the cartridge / Foam filter, simply slide it on the filter cage as illustrated (HEPA cartridge filter is for dry pickup only)



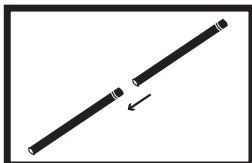
Bag

To install the the bag, first open the bag so it fits all around the inside canister and insert the hole on the intake pipe as illustrated. (Bag is for dry pickup only).



Close vacuum

Once filter /bags are in place, reinsert the top of the vacuum and lock it in place using the handle on each side of the vacuum as illustrated.



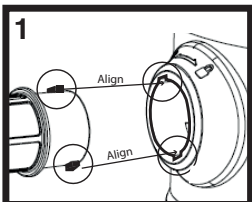
Wand:

To assemble the wand, simply slide the 2 part in each other and push them in so they lock in place.



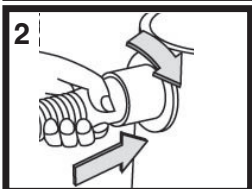
Accessories to wand:

To connect the accessories to the wand, Using friction fit, simply slide the 2 part in each other and push them in so they lock in place.



Hose

Align the pins on the hose with the gap on the suction or blower port of the vacuum as illustrated in image 1.

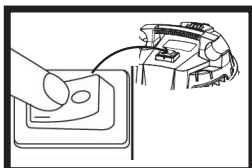


Insert the hose in the suction or blower port and turn it clock wise until you hear a click to lock the hose in place as illustrated in image 2



Plug in:

Plug the vacuum in a regular 110v-120v electrical outlet



Start the vacuum

Start the vacuum by using the switch on top as illustrated.

7. DRY PICKUP SYSTEM OPERATION INSTRUCTION

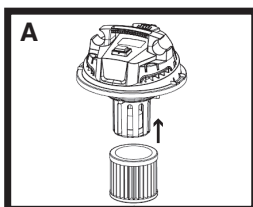
WARNING: BE SURE TO READ, UNDERSTAND AND APPLY INFORMATION, UNDER IMPORTANT SAFETY INSTRUCTION. DO NOT VACUUM AREAS WITH FLAMMABLE GASES, VAPORS OR EXPLOSIVE DUST IN THE AIR. TO REDUCE RISK OF HEALTH HAZARDS FROM VAPORS OR DUST, DO NOT VACUUM TOXIC MATERIALS

CAUTION:

- Do not vacuum drywall dust or fireplace soot or ash with standard Wet/Dry filter. This is a very fine dust which will not be captured by the filter and may cause damage to motor. When vacuuming fine dust use the Collector filter (1 included).
- Keep filter clean

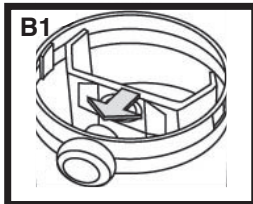
WARNING: DO NOT PLUG IN POWER CORD TO POWER OUTLET. MAKE SURE PLUG IS DISCONNECTED BEFORE CHANGING AND CLEANING FILTERS.

FOR DRY PICKUP - Cartridge filter, disposable bag OR dust collector must be in place. AT ALL TIMES WHEN PICKINGUP FINE DUST (GYPSUM) FILTER AND BAG MUST BE IN PLACE



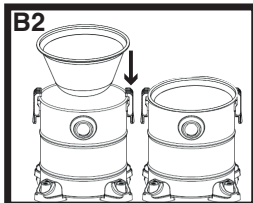
Cartridge filter

To install the cartridge filter, simply slide it on the filter cage as illustrated in section (A)

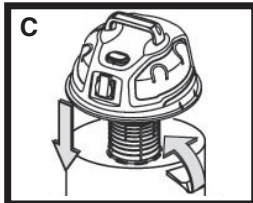


Bag / Dust Collector

To install the bag, first open the bag so it fits all around the inside canister and insert the hole on the intake pipe as illustrated in section (B1).

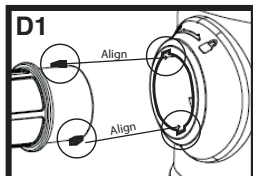


If using dust collector, install it laying flat on the edge of the vacuum as illustrated in section (B2)



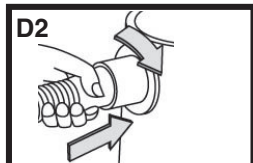
Close the vacuum

Put the top of the vacuum back in place and lock it in place using the handle on each side of the vacuum as illustrated in section (C)

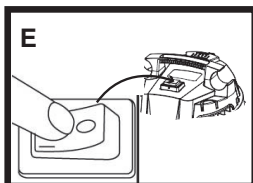


Hose

Align the pins on the hose with the gap on the suction port of the vacuum as illustrated in image D1.



Insert the hose in the suction port and turn it clock wise until you hear a click to lock the hose in place as illustrated in image D2



Turn vacuum on

Plug in the vacuum and turn it on using the switch on the vacuum as illustrated in section (E)

8. WET PICKUP SYSTEM OPERATION INSTRUCTION

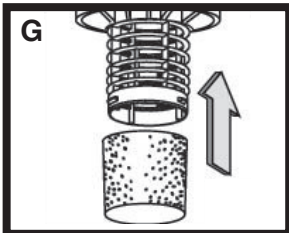
WARNING: BE SURE TO READ, UNDERSTAND AND APPLY INFORMATION, UNDER **IMPORTANT SAFETY INSTRUCTION. DO NOT VACUUM AREAS WITH FLAMMABLE GASES, VAPORS OR EXPLOSIVE DUST IN THE AIR. TO REDUCE RISK OF HEALTH HAZARDS FROM VAPORS OR DUST, DO NOT VACUUM TOXIC MATERIALS**

CAUTION: • Do not vacuum drywall dust or fireplace soot or ash with standard Wet/Dry filter. This is a very fine dust which will not be captured by the filter and may cause damage to motor. When vacuuming fine dust use the Collector filter (1 included).

WARNING: DO NOT PLUG IN POWER CORD TO POWER OUTLET. MAKE SURE PLUG IS DISCONNECTED BEFORE CHANGING AND CLEANING FILTERS.

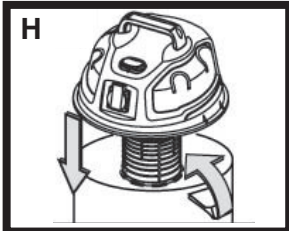
CAUTION: KEEP FILTER CLEAN

FOR WET PICKUP - Only use the foam filter. DO NOT USE Cartridge filter, disposable paper bag OR dust collector

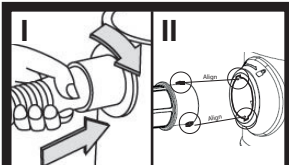


To install the foam filter, simply slide it on the filter cage as illustrated in section (G)

“GRILLED” SECTION MUST BE COVERED

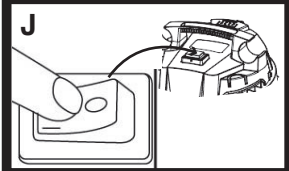


Put the top of the vacuum back in place and lock it using the latches on each side of the vacuum as illustrated in section (H)

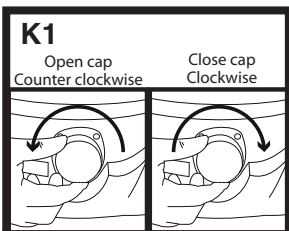


Align the pins on the hose with the gap on the suction or blower port of the vacuum as illustrated in image II.

Insert the hose in the suction port and turn it clock wise until you hear a click to lock the hose in place as illustrated in image I

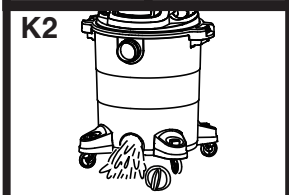


Plug in the vacuum and turn it on using the switch on the vacuum as illustrated in section (J)



After vacuuming is done, use the tank drain to empty water from canister as illustrated in section (K2)

To remove the cap, turn it counter clockwise. To put the cap back on, turn it clock wise as illustrated in section (K1)



WARNING: When emptying the canister, be careful not to over-tilt the vacuum to prevent the water float from sticking to the motor.

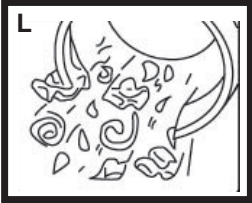
Before re-starting the vacuum, it is important to position it vertically at 90 degrees in order for the water float to be back at the bottom of the filter cage.

9. BLOWER PORT INSTRUCTION

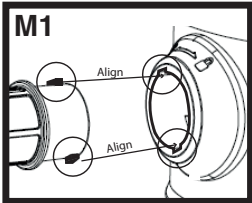


WARNING:

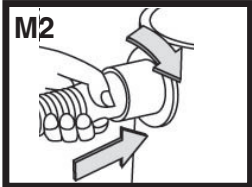
**ALWAYS WEAR SAFETY GOGGLES BEFORE USING THE BLOWER
WEAR A DUST MASK IF BLOWING CREATES DUST THAT MIGHT BE INHALED**



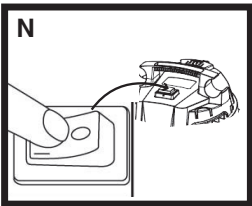
Make sure the debris container is empty before using the blower function, otherwise debris will blow out which may be harmful and cause severe injuries or death.



Align the pins on the hose with the gap on the blower port of the vacuum as illustrated in image M1.



Insert the hose in the suction port and turn it clock wise until you hear a click to lock the hose in place as illustrated in image M2



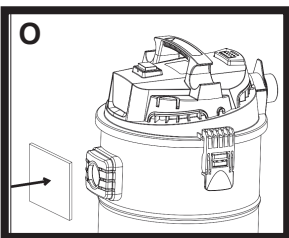
Turn on the vacuum using the switch as illustrated in section (N)

10. DUST SHAKING INSTRUCTION

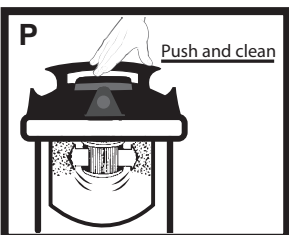


WARNING: VACUUM MUST BE USED AT LEAST 1-2 MINUTES IN ORDER FOR THE DUST SHAKING TO WORK

Keep vacuum running



Step 1: Block the suction port as illustrated in section (O)



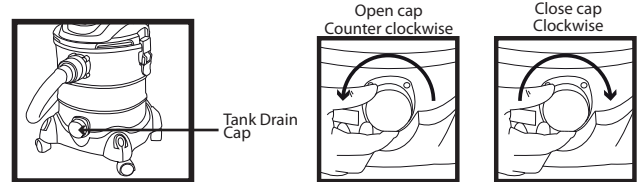
Step 2: Block the suction port as illustrated in section (O) and press the shake button for 1 second, then release. Repeat this process a minimum of 10 times.

11. EMPTYING LIQUID WASTE FROM THE TANK DRAIN

To empty liquid waste from the tank drain, turn the vacuum off and remove the plug from the wall outlet.

Remove the tank drain cap and dispose of the liquid waste in a suitable drain. Use side carry handles to lift the vacuum when emptying the tank into drains that are located above floor level.

After the tank is empty, put the drain cap back in place.



12. AUTOMATIC SUCTION SHUT OFF


The vacuum is equipped with an automatic suction shut-off that operates when picking up liquids.

As the level of the liquid rises in the tank, an internal float rises until it seats itself against a seal at the intake of the motor, shutting off suction.


When this happens, the motor will develop a higher than normal pitch noise and the suction is drastically reduced or the vacuum will automatically shut off.

If this occurs, turn unit off immediately. Failure to turn unit off after float rises and shuts off suction will result in extensive damage to the motor.

Afterwards, empty the liquid waste from the tank as outlined in the previous section.

 **NOTE:** If accidentally tipped over, the vacuum could lose suction. If this occurs, turn the unit off and place the vacuum in the upright position. This will allow the float to return to its normal position and you will be able to continue operating the system.


13. FILTER MAINTENANCE

 **WARNING:** Turn off the power switch first and pull out the power plug of the cleaning filter before maintenance. Take out the filter and flush with water. It is recommended to flush the filter under tap water. Flush the dust on the filter. Put the filter in a well-ventilated place and dry it naturally for storage and future use.

- 1- Shake off moisture and dry filter completely in order to prevent peculiar smell or blockage.
- 2- Do not dry filter with air blower and other hot winds in order to prevent deformation and cracks..
- 3- Do not use detergent, bleaching agents, diluents, alcohol, etc. in order to avoid cracks, color changes, etc.

Cartridge filter maintenance

1. Unlock and remove the cover of the vacuum
2. Carefully hold and pull the cartridge filter up for removal.
3. Clean the cartridge filter by gently tapping or brushing dirt off. Cleaning should not be done indoors in living areas. For optimal performance a new filter is recommended.
4. Install cleaned or new filter into place as instructed at page 8 of this manual.
5. Wet filters should be removed and allowed to air dry for 24 hours before installing onto the filter cage.

 **WARNING:** This filter is made of high quality paper designed to stop small particles of dust. A dry filter is necessary to pick up dry material. If you use your vacuum to pick up dust when the filter is wet, the filter will clog quickly and be very difficult to clean. The filter may become saturated when picking up large quantities of liquid causing misting to appear in the exhaust air. At that time, you should dry or change filter to eliminate this occurrence. Check filter for tears or small holes. Even a small hole can cause dust to be exhausted. Do not use a filter with holes or tears. Replace it immediately.

Foam filter maintenance

1. Unlock and remove the cover of the vacuum
2. Carefully hold and pull the foam filter up for removal.
3. Use a mild soap and water solution to wash foam sleeve filter and rinse with clean water.
4. Install cleaned or new filter into place as instructed in page 9 of this manual.
5. Wet filters should be removed and allowed to air dry for 24 hours before installing onto the filter cage.

14. LUBRICATION

No lubrication is necessary as the motor is equipped with lifetime lubrication bearing

15. TROUBLE SHOOTING

PROBLEM	POSSIBLE CAUSES	SOLUTION
Parts/accessories missing	1. Packed in tank	1. Check in tank 2. If not there, contact BIDZ customer service
Vacuum cleaner will not start	1. No power at receptacle 2. Defective switch or defective motor	1. Check for power 2. Contact BIDZ customer service
Dust discharging from exhaust	1. Filter not installed/not installed properly 2. Filter damaged 3. Filter clogged or dust is too fine 4. Filter not functional	1. Properly install filter 2. Replace filter 3. Use more efficient filter 4. Clean or replace filter
Loss of suction	1. Loose hose connection 2. Filter clogged 3. Full tank 4. Hole in hose	1. Tighten hose connection 2. Clean or replace filter 3. Empty tank 4. Replace hose
Static shock	1. Dry environment 2. Relative humidity of air is low	1. Add moisture to air (if practical, use a console or installed humidifier). 2. This situation is temporary and does not affect the use of the vacuum cleaner.

16. STORAGE

Before storing your vacuum the tank should be emptied and cleaned. Never allow liquids to sit in the tank for any extended period of time. The vacuum should be stored indoors.

17. SERVICE

Do not attempt to service your Bidz wet/dry vacuum cleaner beyond what is described in this manual. Refer all other servicing to a qualified service center or contact us directly at 1-800-776-7891 to speak with a technician

18. SAFETY NOTE



WARNING – IF ANY OF THE MOTOR HOUSING PARTS SHOULD BECOME DETACHED OR BROKEN, EXPOSING THE MOTOR OR ANY OTHER ELECTRICAL COMPONENTS, OPERATION SHOULD BE DISCONTINUED IMMEDIATELY TO AVOID PERSONAL INJURY OR FURTHER DAMAGE TO THE VACUUM. REPAIRS SHOULD BE MADE BEFORE REUSING THE VACUUM.

19. THREE (3) YEAR WARRANTY

The BIDZ Warranty on the vacuum system is only valid for the original owner and is non-transferable. The warranty only covers **1-year labour warranty**. The use of electrical power other than prescribed on the unit and/or any repair(s) made by other than authorized service person will render this warranty null & void. The manufacturer is not responsible to any transportation/freight. Should this product be used for rental service, a 90 day limited warranty will apply. (Parts not included)

The BIDZ Vacuum Body - Three (3) years: Bidz will, for Three (3) years, replace any defective parts of the vacuum body, housing & dust bin as long as you own it, if used in normal conditions and properly maintained as stated in this instruction manual.

The Bidz Vacuum Unit's Parts - Three (3) years: BIDZ will replace any defective parts of the vacuum power unit for Three (3) years following the purchase date, if used in normal conditions and properly maintained as stated in the power unit instruction manual.

20. One (1) YEAR INDUSTRIAL / COMMERCIAL WARRANTY

The BIDZ Warranty on the vacuum system is only valid for the original owner and is non-transferable. The warranty only covers **1-year on parts and labour warranty**. The use of electrical power other than prescribed on the unit and/or any repair(s) made by other than authorized service person will render this warranty null & void. The manufacturer is not responsible to any transportation/freight. Should this product be used for rental service, a 90 day limited warranty will apply. (Parts not included)

The BIDZ Vacuum Body - One (1) year: Bidz will, for One (1) year, replace any defective parts of the vacuum body, housing & dust bin as long as you own it, if used in normal conditions and properly maintained as stated in this instruction manual.

The Bidz Vacuum Unit's Parts - One (1) year: BIDZ will replace any defective parts of the vacuum power unit for One (1) year following the purchase date if, used in normal conditions and properly maintained as stated in the power unit instruction manual.

THOSE WARRANTIES DO NOT COVER ACCESSORIES. Bidz assumes no responsibility for damage or faulty performance caused by misuse or careless handling, or where repairs or modifications have been made or attempted by others.

Use of non-recommended filters and/or accessories may void the manufacturer's warranty

Do not attempt to service your vacuum beyond that described in the User Manual.

THOSE WARRANTIES DO NOT COVER :

- Any part that has become inoperative due to misuse, negligence, direct/indirect abuse, accidents, improper maintenance, repairs or alterations;
- Consumables such as cartridge filters, cloth filters, dust collection bags, foam filter sleeves, and cloth filters;
- Normal wear and tear of parts and attachments, such as hose, nozzles, or casters;
- Normal deterioration of the exterior finish due to use or exposure;
- Any product where serial number/data label is tampered with or removed;
- Any product purchased from an unauthorized retailer.

This warranty gives you specific legal rights, and you may also have other rights which vary by jurisdiction.

If you consider the product is affected by a defect, it should be returned at the end point of purchase or send an email at info@bidzvac.com. If you decide to send an email to info@bidzvac.com, a description of the alleged problem, picture showing the issue and proof of purchase must be included in the email. Return of the product is at your own expenses.

Customer support in North America: For technical support or service contact Bidz Corporation at 1 (800) 776-7891 or via email at info@bidzvac.com



**3-Year Warranty
1-Year Commercial Warranty**

**www.bidzvac.com
1-800-776-7891**

**TO REGISTER YOUR WARRANTY:
www.bidzvac.com**

**EMAIL AT: info@bidzvac.com
TOOL-FREE: 1-800-776-7891**

2044 Autoroute 440 Ouest, Laval, QC, H7S 2M9